



boba
CATALOGUE 2026



NEW!

Boba Buddy

Perfect for tired, little legs
9 - 48 months
18 - 44 lbs

- Toddler sling carrier
- Added comfort
- Ergonomic positioning
- Compact and foldable

oat



black



grey



houndstooth



brown





NEW!

Boba Auri

- One Carrier for Every Phase:
- Designed for comfort, support, and timeless style, the Boba Auri Infant Carrier delivers everything you need for easy, comfortable babywearing.
- All in one beautifully crafted design that grows with your baby from 7 to 45 lbs.

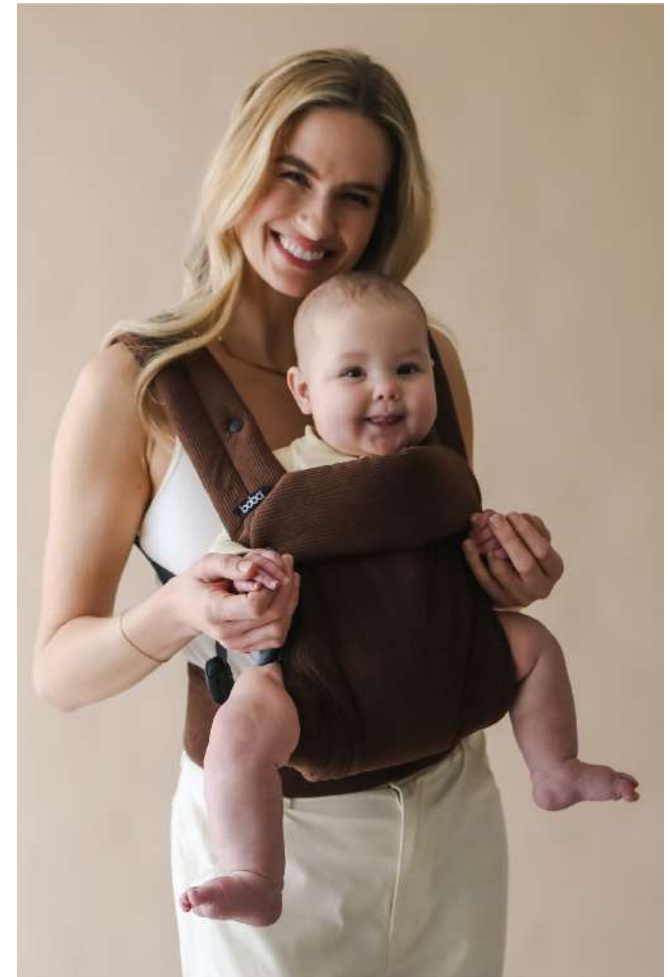
oat

black

grey

houndstooth

brown



NEW!

Boba Air

Travel Carrier

works best for
babies 4 - 24
months , or big kids
up to 45lbs



Self-Storing



Travel
Friendly



Stain-resistant &
Quick-drying!



Front & Back
Carry



Certified
Hip-Healthy



Lightweight &
Breathable

black



grey



black



grey



Boba Wraps

— Classic —

Birth - 35 lbs / 16 kgs,

0 - 18 months

One Size Fits All

95% Cotton, 5% Spandex

Certified Hip-Healthy

Breastfeeding Friendly



Ergonomic
positioning



Promotes
Bonding



Intelligent
stretchy fabric



Machine
Washable



New seasonal
releases



grey

black

sage green



— navy blue —



— dusty pink —



Boba Wraps

— Serenity —

Birth - 35 lbs / 16 kgs,
0 - 18 months

One Size Fits All

68% Viscose from Bamboo,
25% Cotton, 7% Spandex

Certified Hip-Healthy



Ergonomic
positioning



Promotes
Bonding



Intelligent
stretchy fabric



Machine
Washable



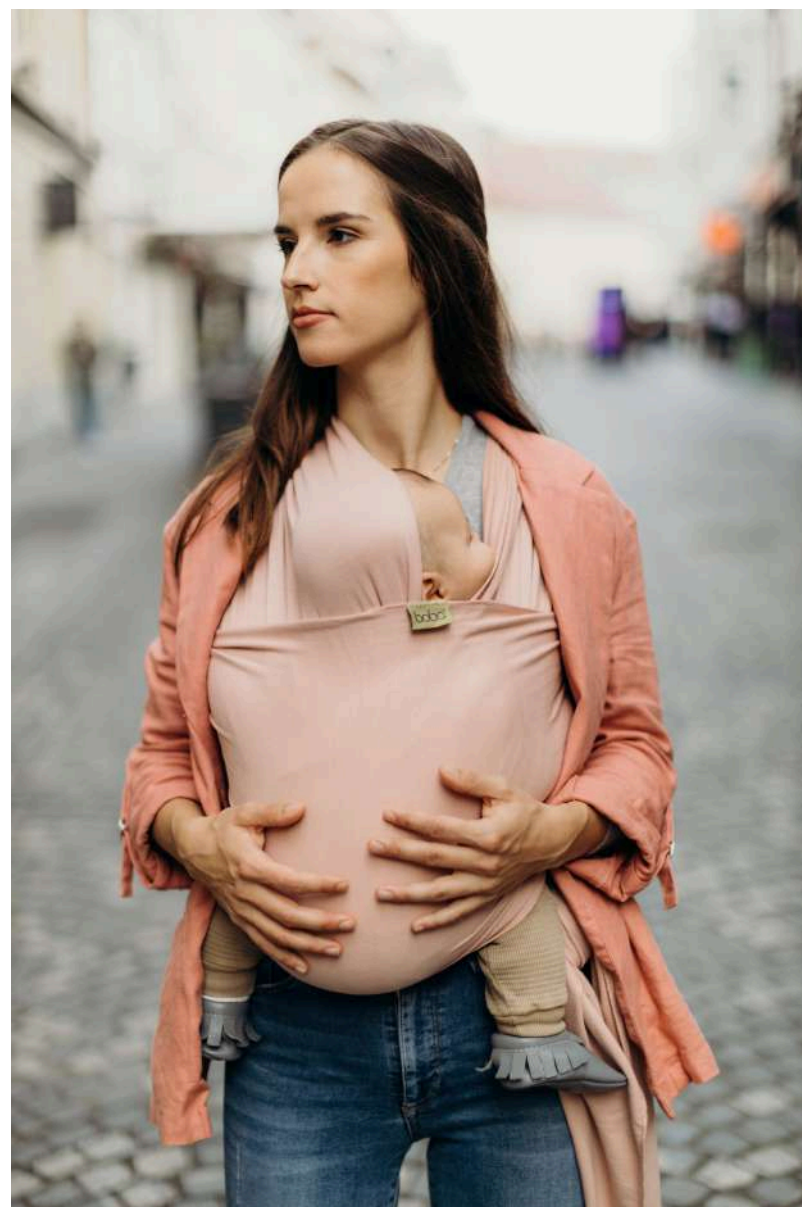
New seasonal
releases



— light grey —



— bloom —



— dark grey —



— organic stone —



— sea mist —



boba[®] Bliss

7 - 35 lbs / 3.5 - 16 kg,

0 - 18 months

92% High-Quality Cotton 8% Spandex

Shoulder strap adjustment from 50-100 cm in

height Waistband adjustment 60-145cm One

One size fits all

Certified Hip Healthy



Certified
Hip Healthy



Intelligent
Hybrid Fabric



Machine
Washable



Crossed
Shoulder
Straps



Promotes
bonding



Breastfeeding
Friendly



Wow, it's hybrid!

But what does that mean?

It's a combination of a buckle carrier and a stretchy wrap! It brings together the best of both worlds – the ease of use and convenience of our buckle carriers and the softness and containment of our wraps



No twists, no flips, just functional adjustment of both the shoulder strap coverage and width and height of the carrier panel!



Gathered seat

The original design of the seat allows for the carrier to seamlessly grow with your baby and supports the healthy pelvis, hip, and leg position!

Soft-structured belt

A modular buckled waistbelt is made to mold to your body for comfort even when wearing smaller babies higher up on your torso!



Crossed straps

Versatile wrap-like shoulder straps are adjustable in both length and width to ensure a perfect fit for all wearers! Featuring our original double adjustable system with the breastfeeding access buckle!

— Grey —



— Black —



— Bloom —



— navy blue —



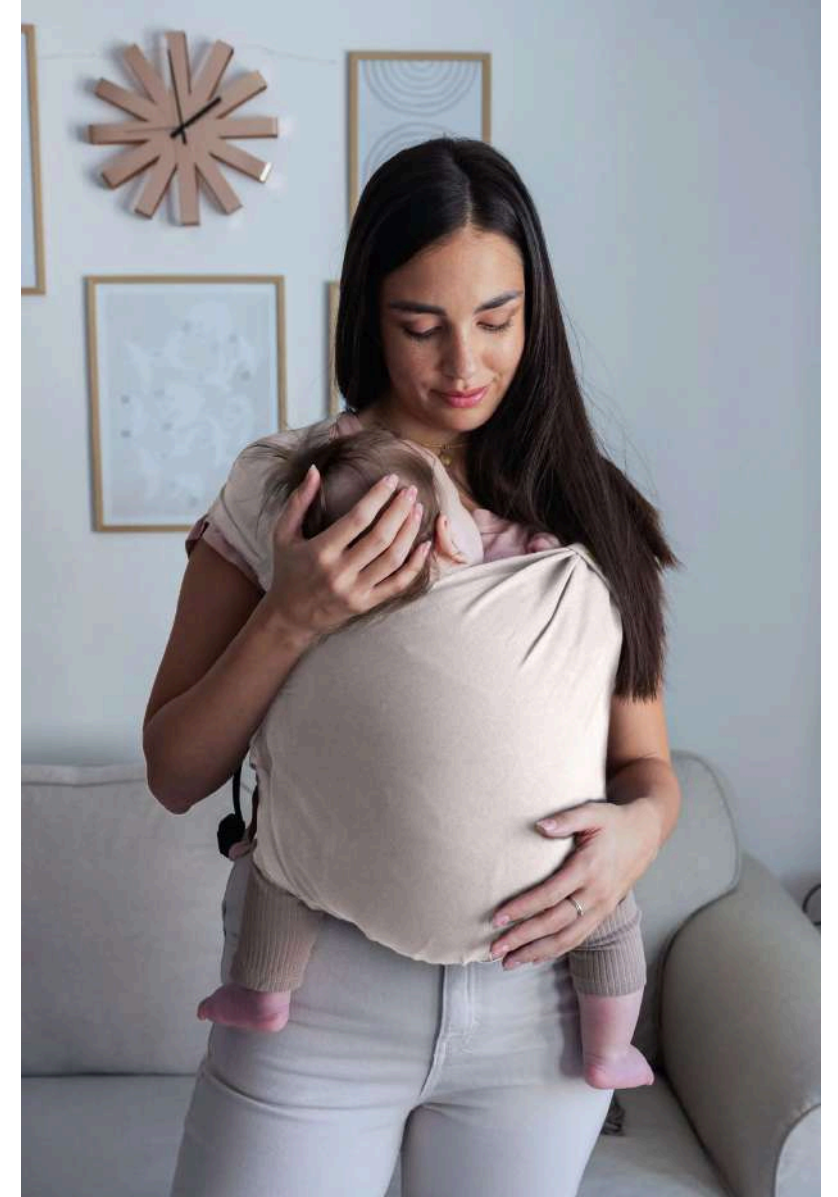
— sea mist —



— charcoal —



— organic stone —



Boba X

7 - 45 lbs / 3.5 - 20 kg,
0 - 36 months

100% High-Quality Cotton Twill
Micro-adjustable Seat and Panel
No infant insert needed
Certified Hip Healthy



Ergonomic
positioning



Front & Back
Carry options



Promotes
Bonding



Machine
Washable



New seasonal
releases



grey



sea mist



black



— organic stone —



— charcoal —



Boba X Linen

— *pampas* —

— *rye* —

For the love of linen.

Flax fibers allow air to circulate more freely and the loosely woven fabric helps ventilation overall keeping you both as cool as possible!



boba

[instagram.com/boba](https://www.instagram.com/boba) | [facebook.com/boba](https://www.facebook.com/boba) | [pinterest.com/boba](https://www.pinterest.com/boba) | [youtube.com/bobafamily](https://www.youtube.com/bobafamily)