



boba  
CATALOGUE 2026



# Boba Air

Travel Carrier

NEW!

works best for  
babies 4 - 24  
months , or big kids  
up to 45lbs



Self-Storing



Travel  
Friendly



Stain-resistant &  
Quick-drying!



Front & Back  
Carry



Certified  
Hip-Healthy



Lightweight &  
Breathable



\_\_\_\_\_ *black* \_\_\_\_\_



\_\_\_\_\_ *grey* \_\_\_\_\_





# Boba Wraps

## Classic

Birth - 35 lbs / 16 kgs,  
0 - 18 months

One Size Fits All

95% Cotton, 5% Spandex

Certified Hip-Healthy

Breastfeeding Friendly



Ergonomic  
positioning



Promotes  
Bonding



Intelligent  
stretchy fabric



Machine  
Washable



New seasonal  
releases





— grey — — black — — sage green —





— navy blue —



— dusty pink —





# Boba Wraps

## — Serenity —

Birth - 35 lbs / 16 kgs,  
0 - 18 months

One Size Fits All

68% Viscose from Bamboo,  
25% Cotton, 7% Spandex  
Certified Hip-Healthy



Ergonomic  
positioning



Promotes  
Bonding



Intelligent  
stretchy fabric



Machine  
Washable



New seasonal  
releases

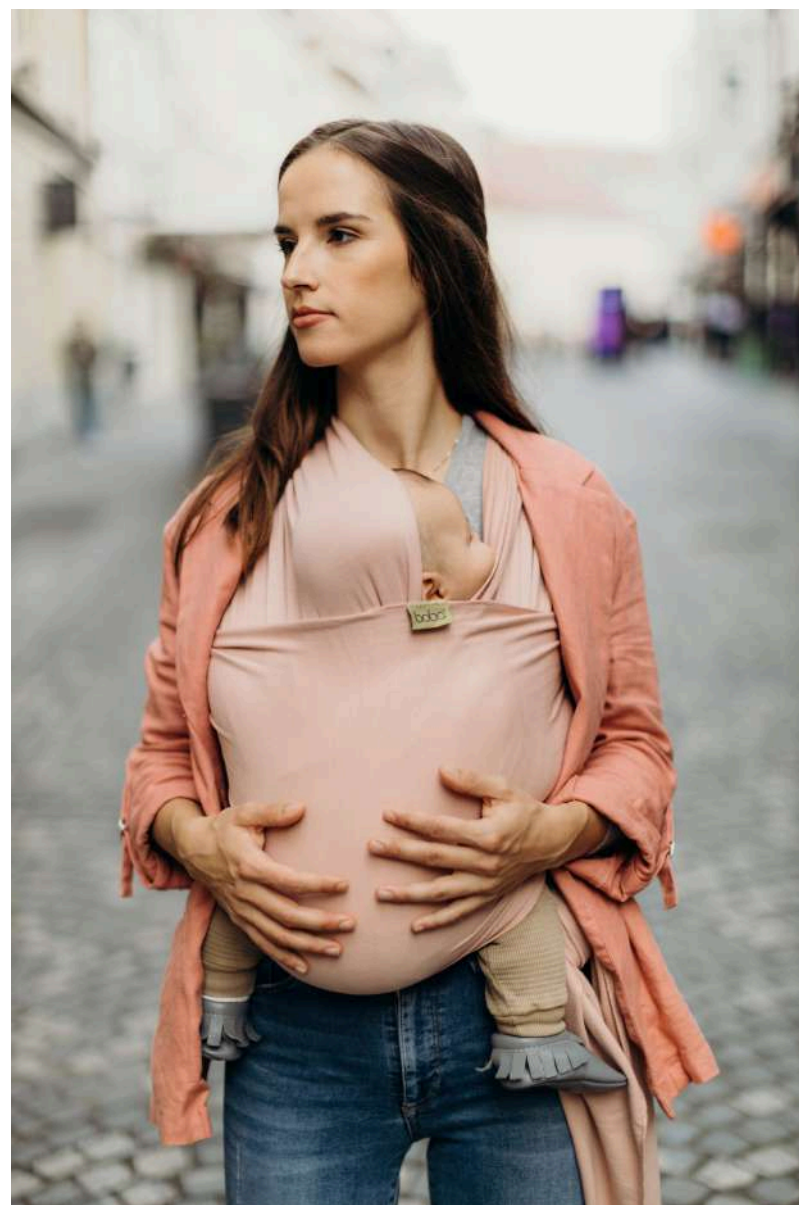




— light grey —

— bloom —

— dark grey —





— organic stone —



— sea mist —





# boba® Bliss

7 - 35 lbs / 3.5 - 16 kg,

0 - 18 months

92% High-Quality Cotton 8% Spandex

Shoulder strap adjustment from 50-100 cm in  
height Waistband adjustment 60-145cm One

One size fits all

Certified Hip Healthy



Certified  
Hip Healthy



Intelligent  
Hybrid Fabric



Machine  
Washable



Crossed  
Shoulder  
Straps



Promotes  
bonding



Breastfeeding  
Friendly





# Wow, it's hybrid!

But what does that mean?

It's a combination of a buckle carrier and a stretchy wrap! It brings together the best of both worlds – the ease of use and convenience of our buckle carriers and the softness and containment of our wraps



## Soft-structured belt

A modular buckled waistbelt is made to mold to your body for comfort even when wearing smaller babies higher up on your torso.

No twists, no flips, just functional adjustment of both the shoulder strap coverage and width and height of the carrier panel!



## Gathered seat

The original design of the seat allows for the carrier to seamlessly grow with your baby and supports the healthy pelvis, hip, and leg position!



## Crossed straps

Versatile wrap-like shoulder straps are adjustable in both length and width to ensure a perfect fit for all wearers! Featuring our original double adjustable system with the breastfeeding access buckle!





— Grey —



— Black —



— Bloom —



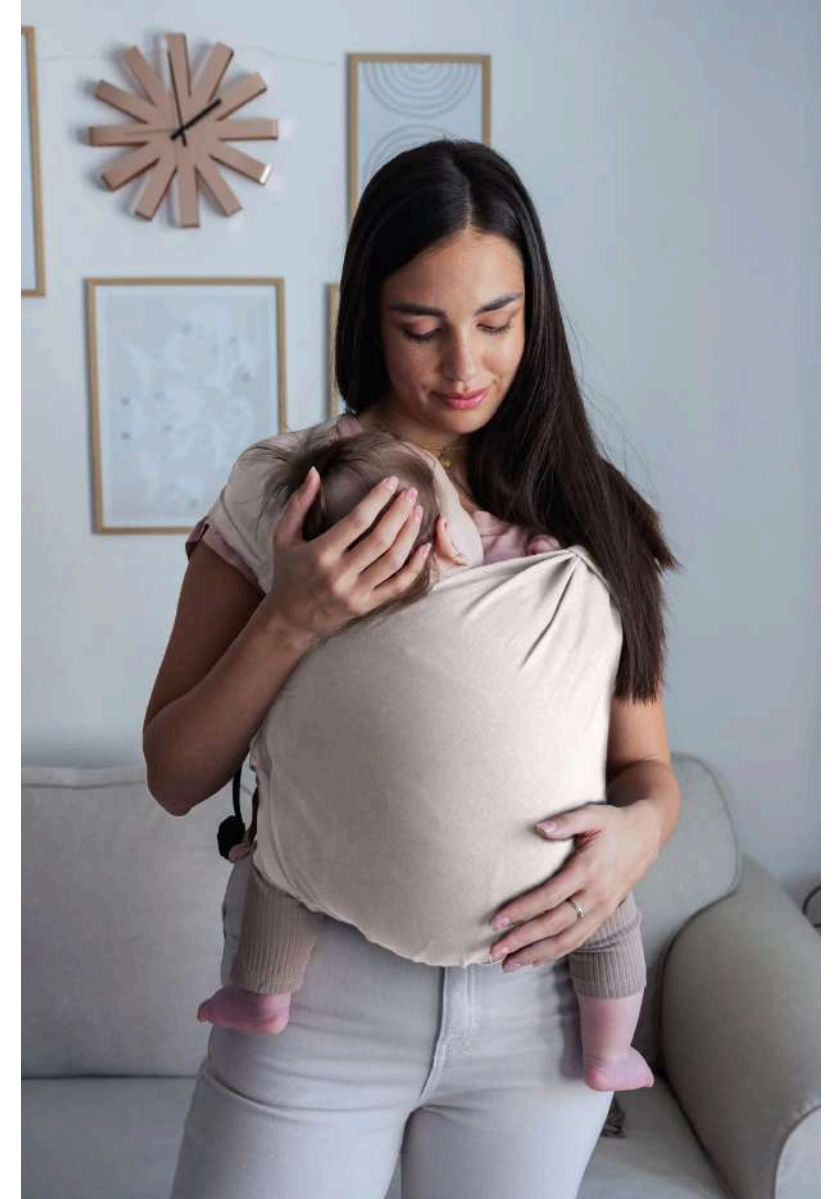


— navy blue —

— sea mist —

— charcoal —

— organic stone —





# Boba X

7 - 45 lbs / 3.5 - 20 kg,  
0 - 36 months

100% High-Quality Cotton Twill  
Micro-adjustable Seat and Panel  
No infant insert needed  
Certified Hip Healthy



Ergonomic  
positioning



Front & Back  
Carry options



Promotes  
Bonding



Machine  
Washable



New seasonal  
releases





— grey —



— sea mist —



— black —





— organic stone —



— charcoal —





# Boba X Linen

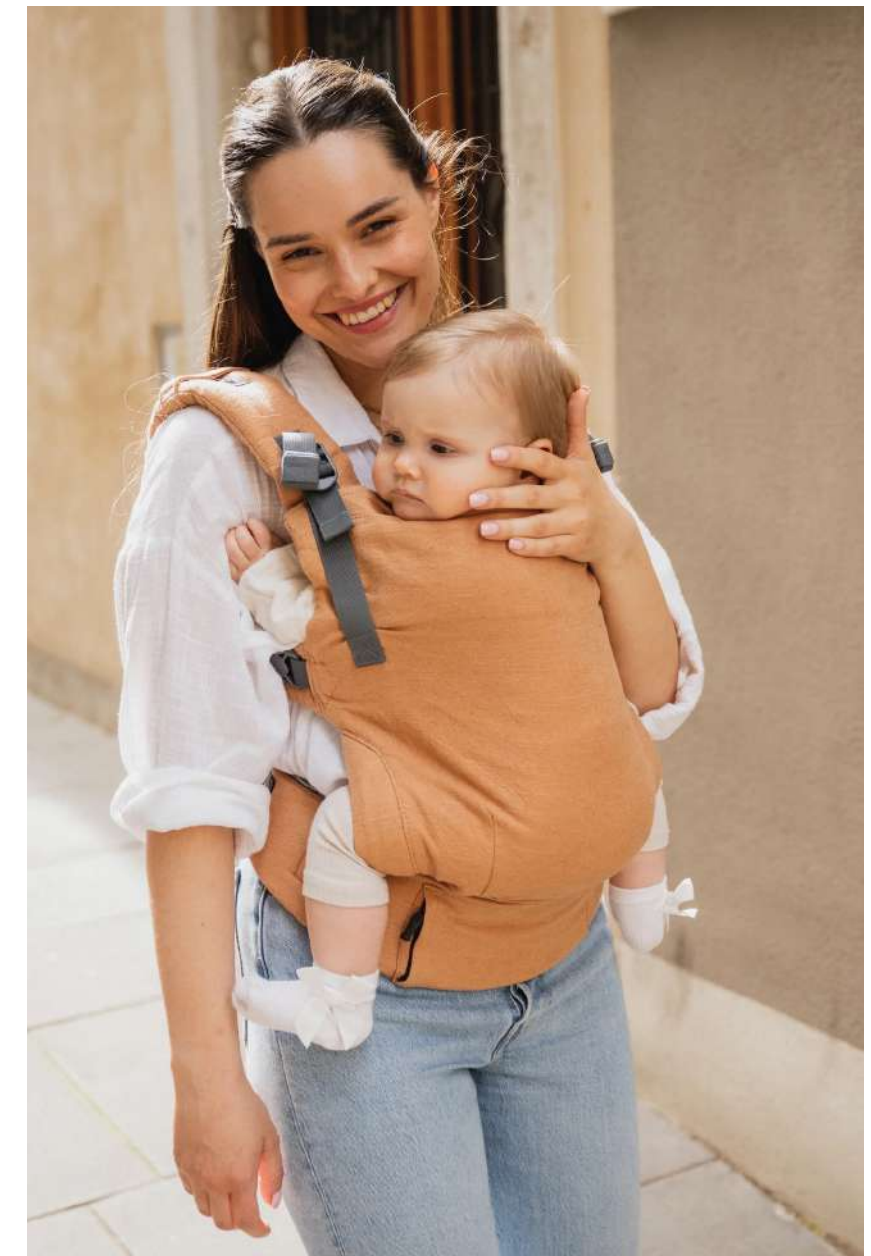
*For the love of linen.*

*Flax fibers allow air to circulate more freely and the loosely woven fabric helps ventilation overall keeping you both as cool as possible!*

— *pampas* —



— *rye* —





boba

[instagram.com/boba](https://www.instagram.com/boba) | [facebook.com/boba](https://www.facebook.com/boba) | [pinterest.com/boba](https://www.pinterest.com/boba) | [youtube.com/bobafamily](https://www.youtube.com/bobafamily)